

Student Comments

More Agencies needed.
People are kind, products are interesting, more companys required.
Awesome Experience and Sparked my interest.
It's nice and encouraging.
It's very nice opportunity working as an assistant for a company in the job fair.
Thank you.
Very good overall.
Good job.
Please get more resorts.
It was fun and good.
U. S. Customs and Border Protection.
Great Reps. From Maddens.
Could use a few more businesses
Could have some better number with Nat R employers
CPS guy was very nice.
Really pulled people in! Very fun to talk to!
Very beneficial for students - more management positions not for Ag.
Would like to see some Accounting businesses
would be good if I didn't already have a job lined up.
They need a larger variety of businesses.
have a possible job lined up.
It was a good experience.
It was interesting.
Very nice.
It was better than class.
It seems to help a lot with looking for a job.
Not very big but OK.
More range of employers. Get some from other states.
Very knowledgeable. Asked lots of questions. Provided adequate info to apply.
Very useful to me to learn about other possibilities.
Good employers with a lot of opportunity.
A lot were not hiring.
Need more Nat R.
Very informative.
More companies, Federal employers.
It was very useful for the information I needed.
Great Job!
I just did a quick walk through not many options for SRM majors.
Was good.
Very beneficial. Very helpful.
The Employers were extremely helpful.
Employers gave detailed information.
It was great.
Very well organized!! Thanks SIFE!
It was very helpful and Great information.
More Nat R Jobs.
Learned a lot very knowledgeable bunch of people.
Was helpful, maybe have more equine people come.
Great Group. Maybe bring Menards back.
Staffs are kind.

Need more management and marketing companies.

Very informative.

Very useful. You guys should do this more often. Thanks for the Job Fair.

Well organized nice to see all the tables full.

Not as many employees as last year. Need more employers seeking full time.

More Nat R Employers.

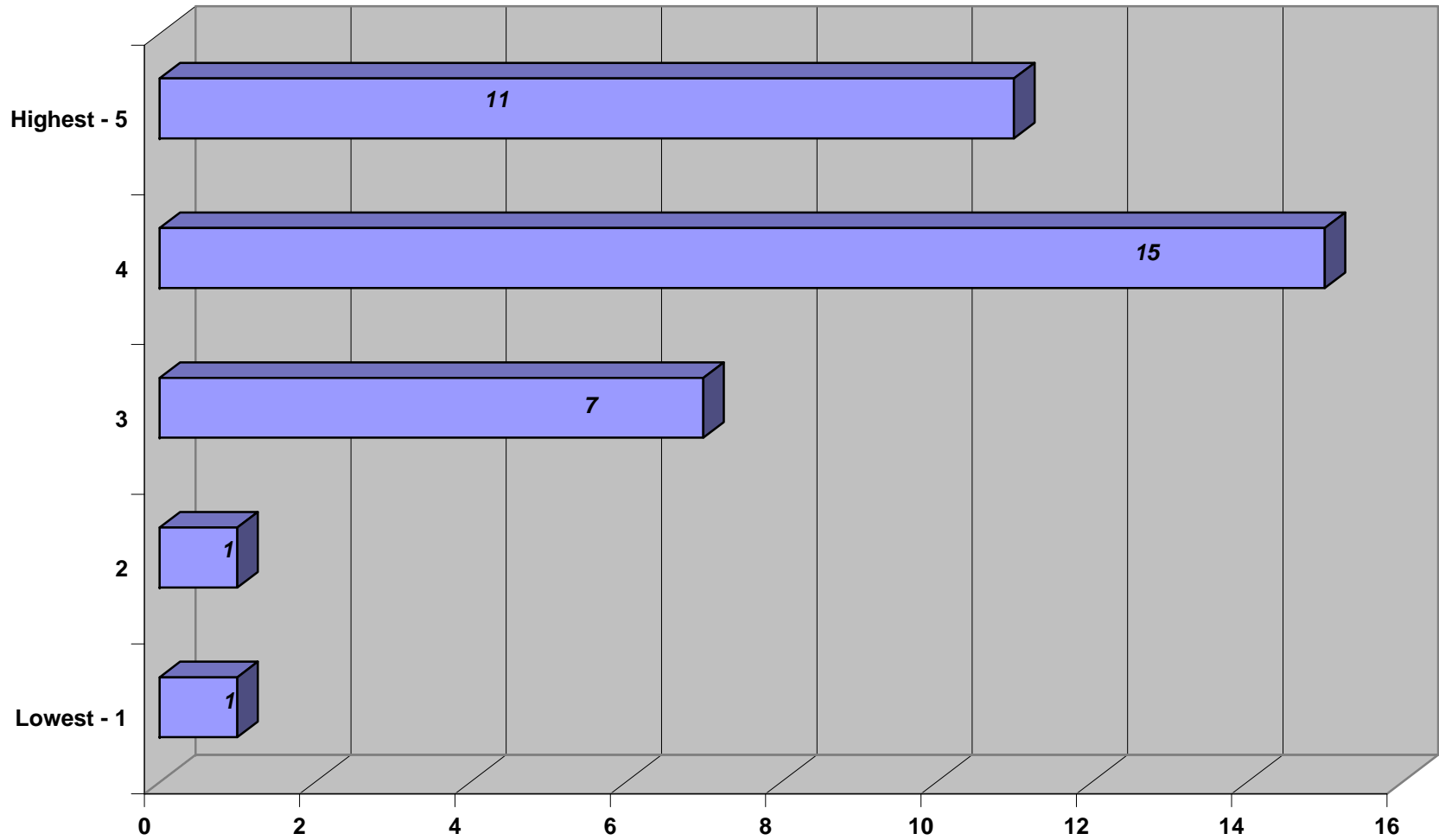
This was very useful.

Need more employers?

Thank you.

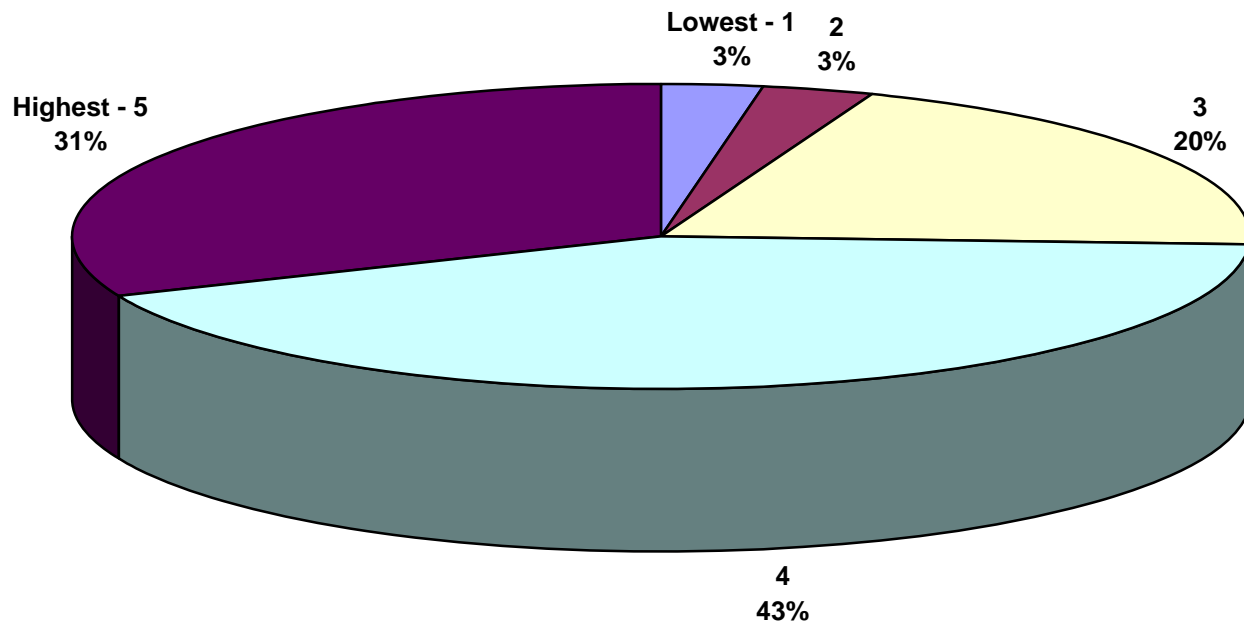
	Lowest - 1	2	3	4	Highest - 5	Total
Usefulness of information	1	1	7	15	11	35

Usefulness of information



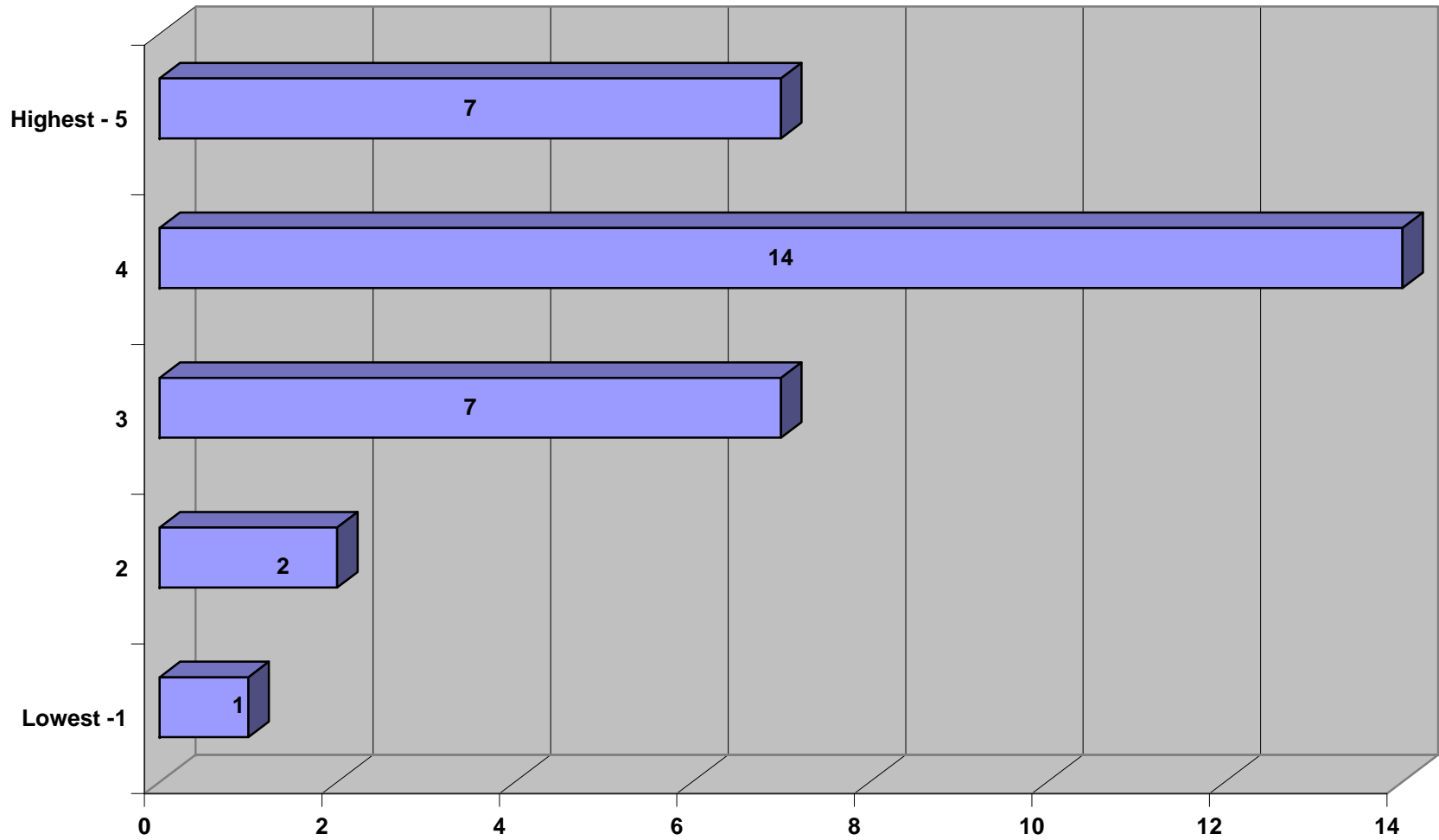
	Lowest - 1	2	3	4	Highest - 5
Usefulness of information	1	1	7	15	11

Usefulness of information



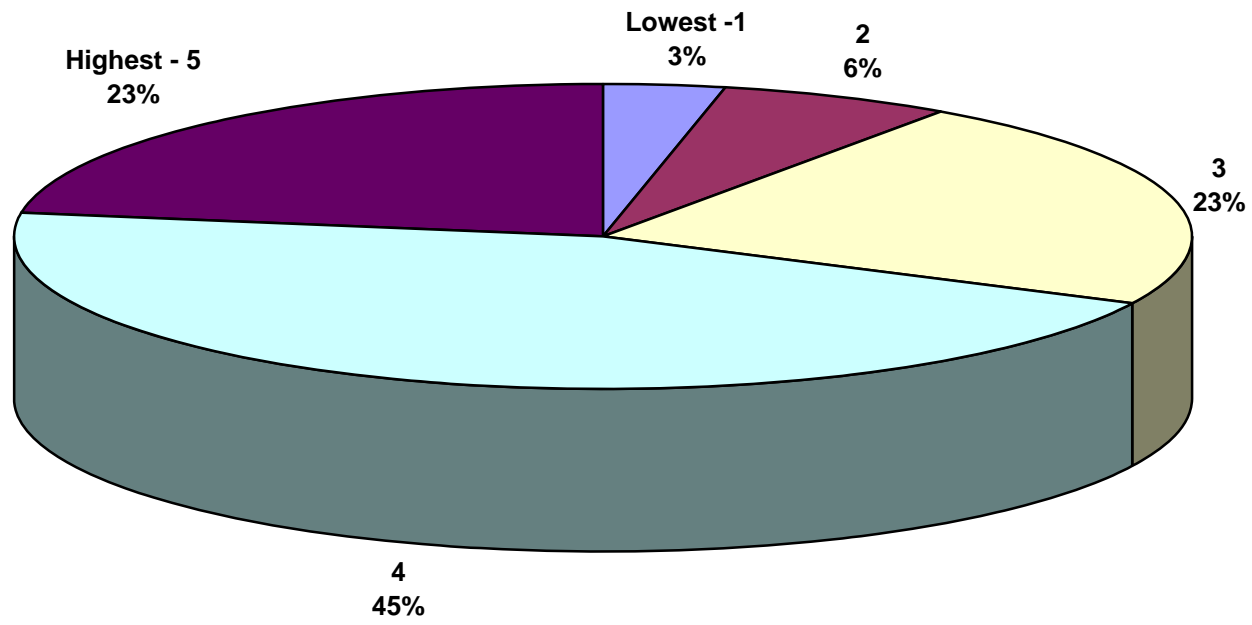
	Lowest -1	2	3	4	Highest - 5	Total
Knowledge Gained	1	2	7	14	7	31

Knowledge Gained



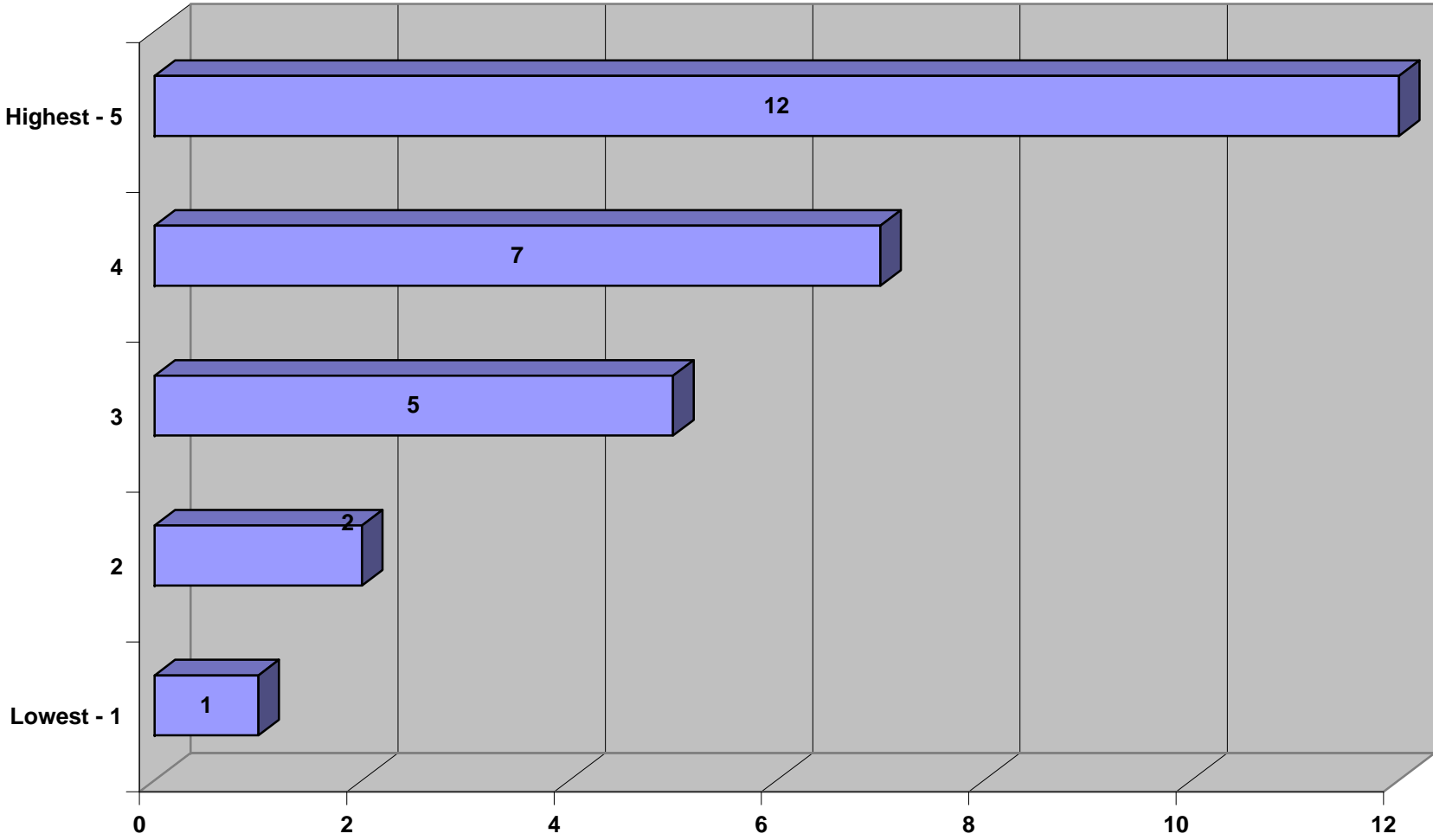
	Lowest -1	2	3	4	Highest - 5
Knowledge Gained	1	2	7	14	7

Knowledge Gained



	Lowest - 1	2	3	4	Highest - 5	Total
Quality of Employer	1	2	5	7	12	27

Quality of Employer



	Lowest - 1	2	3	4	Highest - 5
Quality of Employer	1	2	5	7	12

Quality of Employer

